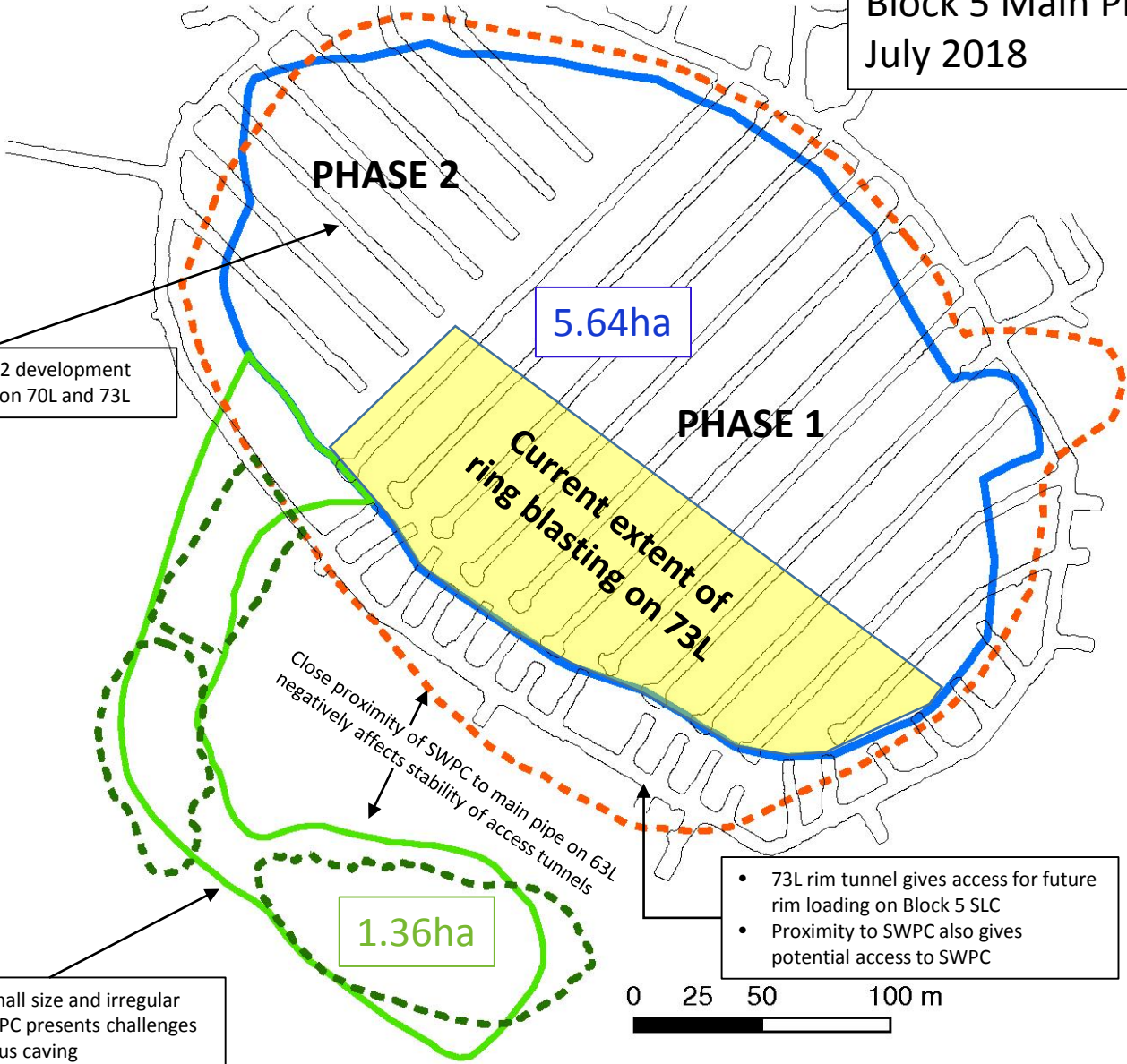


Finsch Diamond Mine  
 Block 5 Main Pipe/SWPC Schematic  
 July 2018



Block 5 SLC Phase 2 development brought forwards on 70L and 73L

5.64ha

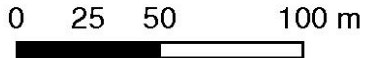
1.36ha

Current extent of ring blasting on 73L

Close proximity of SWPC to main pipe on 63L negatively affects stability of access tunnels

Relatively small size and irregular shape of SWPC presents challenges for continuous caving

- 73L rim tunnel gives access for future rim loading on Block 5 SLC
- Proximity to SWPC also gives potential access to SWPC



- 63 Level**
- Main Pipe
  - SWPC
- 73 Level**
- Main Pipe
  - SWPC